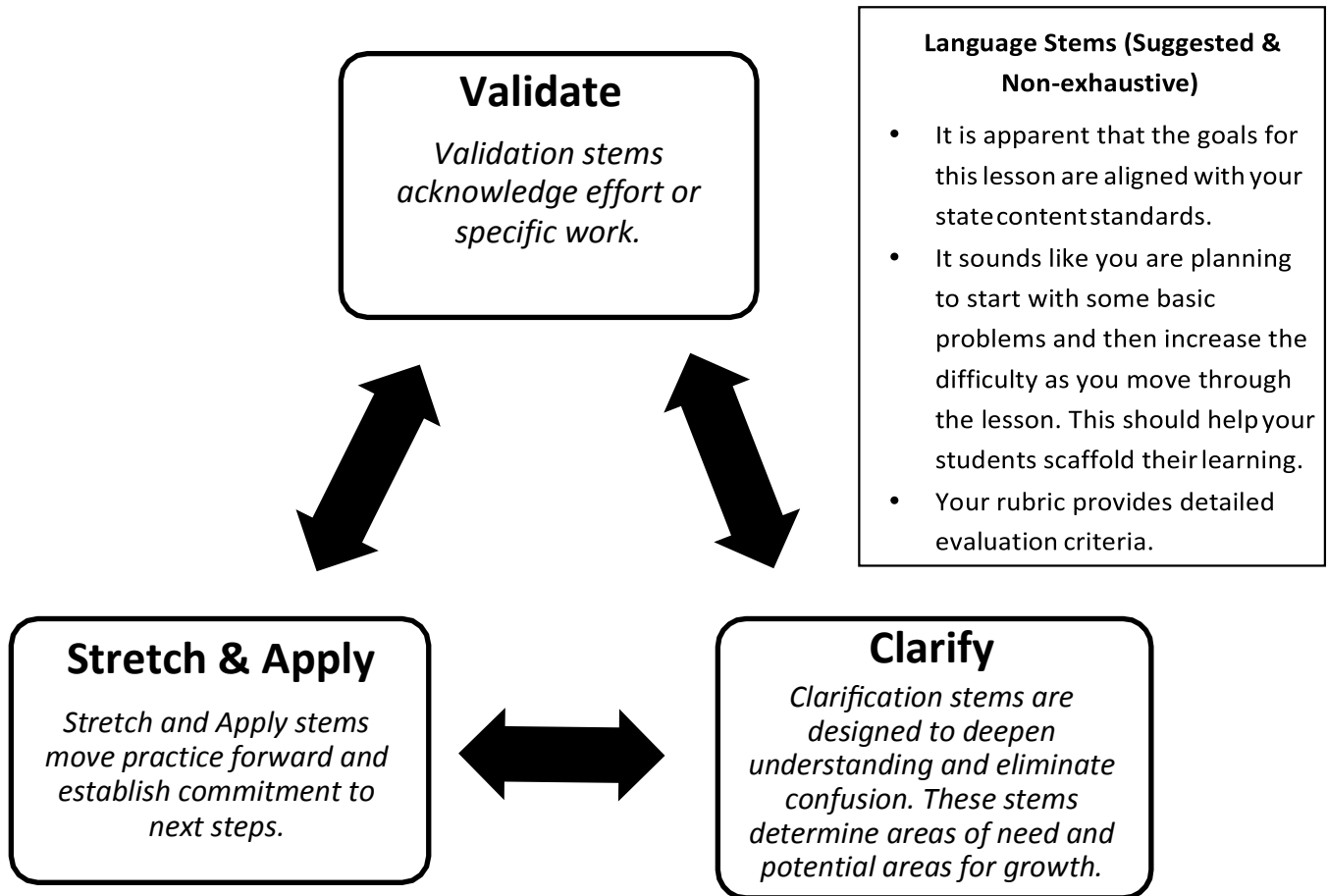


# Coaching Dialogue Protocol with Pre-Observation Stems



## Language Stems (Suggested & Non-exhaustive)

- I'm wondering if there are multiple ways you could assess student learning during this lesson. What are your thoughts?
- Please talk with me about the types of thinking in which your students will need to engage during this lesson.
- This lesson requires a lot of materials. How can you ensure the students have everything they need and that they get their materials in an efficient way?
- Are there any opportunities for student to student interaction during this lesson?
- What are the key pieces of content in this lesson?
- What would the lesson look like if you \_\_\_?

## Language Stems (Suggested & Non-exhaustive)

- You mentioned that the students will have an opportunity to practice categorizing information. Will this happen during the bellringer assignment or during the guided practice?
- You talked about ensuring that the composition of each group is varied. Did you group by gender, ability, or both?
- I heard you say that the students will be allowed to choose a topic for this piece of writing. Are you planning to limit them to expository writing, or can they choose another type of writing?
- You told me that you have high expectations for these students. Can you be specific about your expectations?
- I know you said you will assess the students' written work. Are they producing this work individually or in groups?